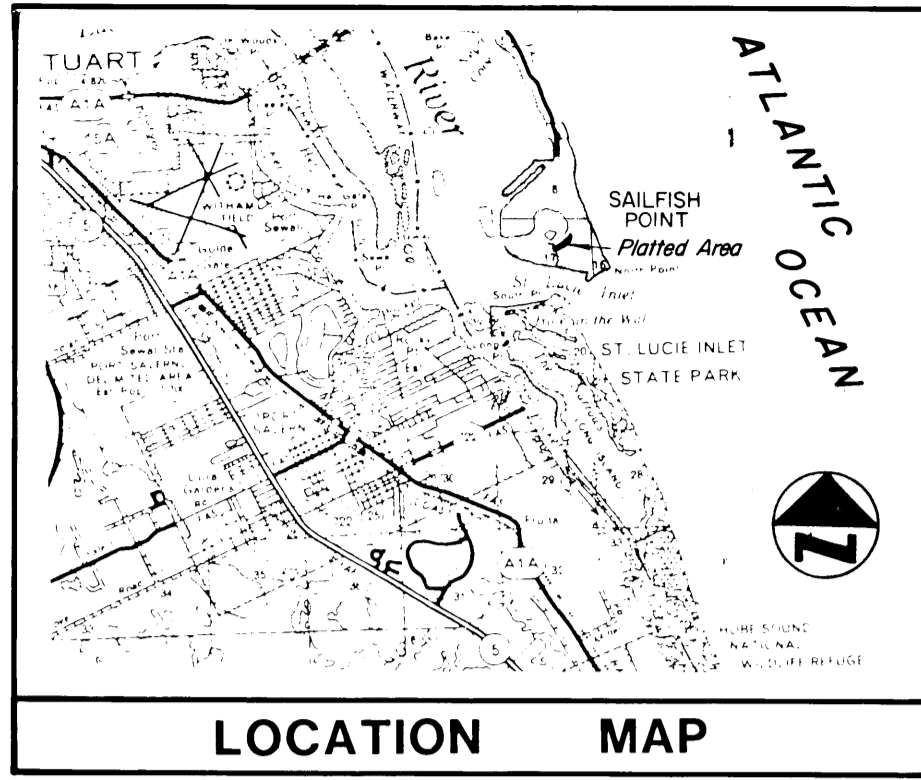


PLAT NO. 8 SAILFISH POINT P.U.D.

LYING IN FRACTIONAL SECTION 8, TOWNSHIP 38 SOUTH, RANGE 42 EAST, MARTIN COUNTY, FLORIDA



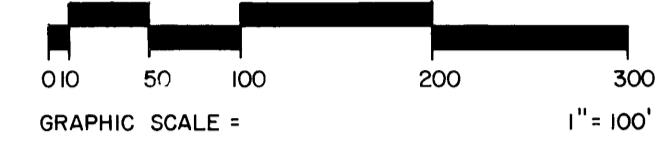
I, Louise V. Isaacs, Clerk of the Circuit Court of Martin County, Florida, hereby certify that this plat was filed for record in Plat Book 9, Page 27, Martin County, Florida, Public Records, this day of _____, 1983.

Louise V. Isaacs, Clerk Circuit Court Martin County, Florida

By: _____ Deputy Clerk

File No. _____

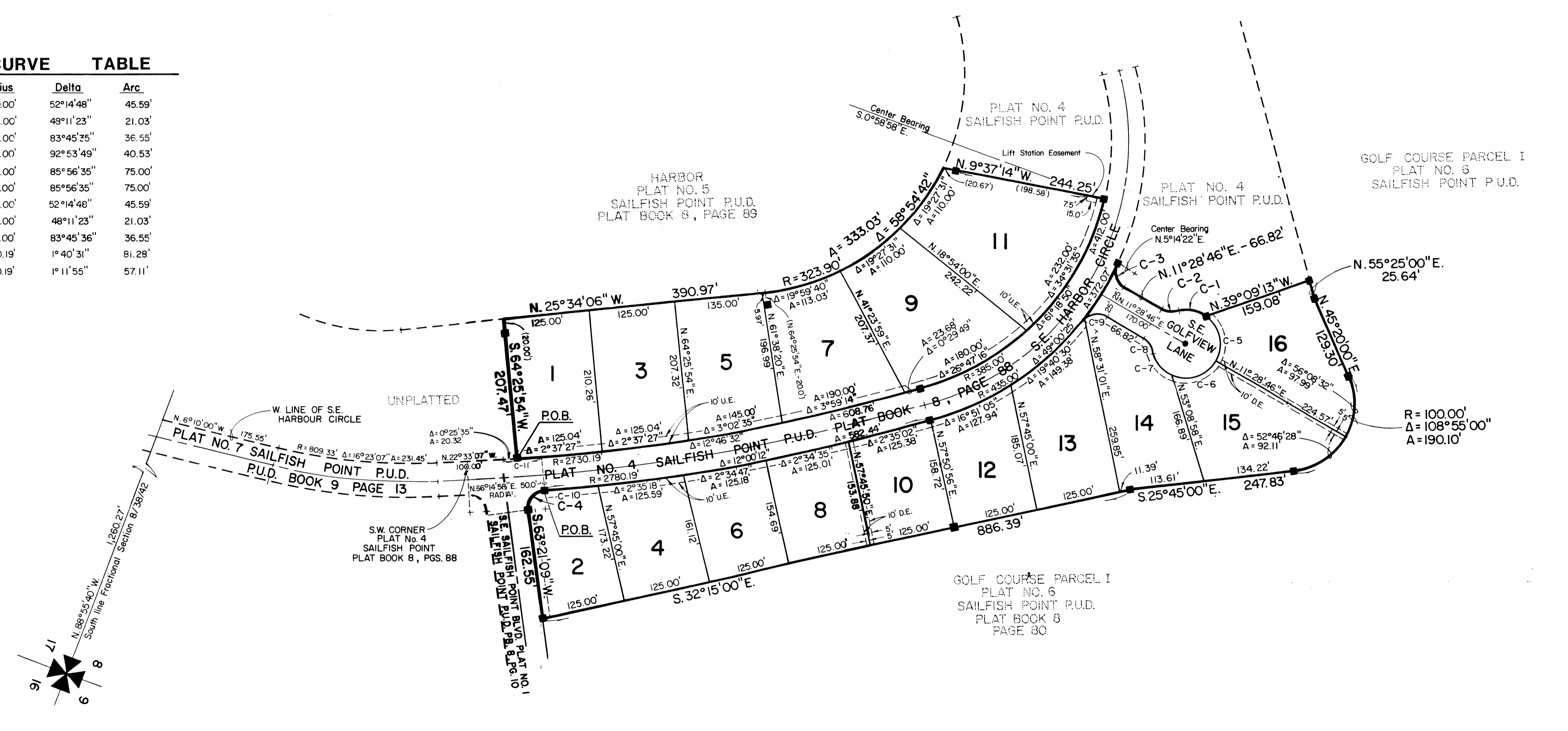
(Circuit Court Seal)



JANUARY 1983

CURVE TABLE

Curve	Radius	Delta	Arc
C-1	50.00'	52°14'48"	45.59'
C-2	25.00'	49°11'23"	21.03'
C-3	25.00'	83°45'25"	36.55'
C-4	25.00'	92°53'49"	40.53'
C-5	50.00'	85°56'35"	75.00'
C-6	50.00'	85°56'35"	75.00'
C-7	50.00'	52°14'48"	45.59'
C-8	25.00'	48°11'23"	21.03'
C-9	25.00'	83°45'36"	36.55'
C-10	2730.19'	1°40'31"	81.29'
C-11	2730.19'	1°11'55"	57.11'



BEARING BASE
All Bearings shown hereon are Relative to the bearings shown on Plat No. 7 Sailfish Point P.U.D. Book 9, Page 13

- = P.C.P. (Permanent Control Point)
- = P.R.M. (Permanent Reference Monument)
- DE. = Drainage Easement
- UE. = Utility Easement

- The following Building Setback lines shall apply to all lots platted hereon
1. Front setback = 25' from right of way line
 2. Side setback = 15' from property line
 3. Rear setback from Harbor = 50' from property line
 4. Rear setback on Golf Course = 25' from property line